

## R series

### VARIABLE RESISTORS from 0 to 160/6600 watt

These table type variable resistors are indispensable aids, designed for varying d.c. and a.c. currents or voltages in a wide range of the electrical industry, such as testing the electric circuits of motor vehicles, application in the laboratory and education and other.

The units can be operated as a rheostat or potentiometers.

*Many other models  
available on request*

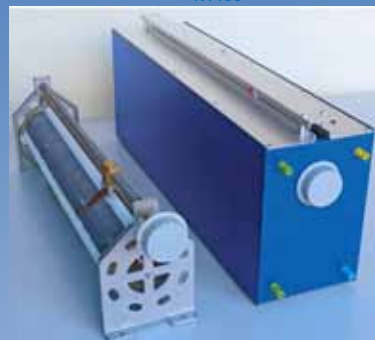
#### Applications

- Electrical industry
- Measure and control laboratory
- Educational

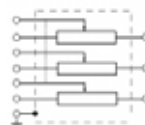
#### Safety standards:

- Construction according to EN61010-1
- Protection degree IP20

R1100



- Resistance tolerance:  $\pm 10\%$
- Insulation resistance:  $> 3 \times 10^7$  ohm, Earth resistance:  $< 0,1$ ohm
- Terminals allowed voltage: max. 600V ac/dc
- Allowed voltage between terminals (three phase): max 700V ac/dc
- Break down voltage against casing:  $> 2500$ V ac



Model	Resistance ( $\Omega$ )	I rated (A)	I max - (A) <15'	max (W) <15'	Size (mm) & weight (kg)	Description
R160-00-1R	1	13	18	320	Approx. 223x93x150 1,75 – 1,95	Small handy version. 160/320VA.
R160-10-3R3	3,3	7	10	320		
R160-20-10R	10	4	5,7	320		
R160-30-33R	33	2,2	3,1	320		
R160-40-100	100	1,25	1,8	320		
R160-50-330R	330	0,7	1,0	320		
R160-60-1k	1000	0,4	0,57	320		
R160-70-3k3	3300	0,22	0,31	320		
R320-00-1R	1	18	25	640	Approx. 446x93x150 2,85 – 3,25	Usual loadings version. One resistance coil in a housing. 320 /640VA.
R320-10-3R3	3,3	10	14	640		
R320-11-4R7	4,7	8,25	11,7	640		
R320-12-6R8	6,8	6,86	9,7	640		
R320-20-10R	10	5,7	8	640		
R320-21-15R	15	4,6	6,5	640		
R320-22-20R	20	4	5,7	640		
R320-30-33R	33	3,1	4,4	640		
R320-35-50R	50	2,5	3,5	640		
R320-40-100R	100	1,8	2,5	640		
R320-50-330R	330	1,0	1,4	640		
R320-60-1k	1000	0,57	0,8	640		
R320-70-3k3	3300	0,31	0,44	640		
R320-80-10k	10000	0,18	0,25	640		
R640-00-0R5	0,5	36	50	1300	Approx. 446x165x150 5,0 – 5,8	High loadings version. Two parallel connected resistance coils, in a housing. Sliding pieces are mechanically and electrically connected. 640/1280VA.
R640-10-1R6	1,6	20	28	1300		
R640-20-5R	5	11,4	16	1300		
R640-21-11R5	11,5	7,4	10,5	1300		
R640-30-16R5	16,5	6,2	8,7	1300		
R640-40-23R	23,3	5,2	7,6	1300		
R640-41-33R	33	4,4	6,2	1300		
R640-42-50R	50	3,6	5	1300		
R640-43-106R	106	2,4	3,5	1300		
R640-50-165R	165	2	2,8	1300		
R640-60-325R	325	1,4	1,9	1300		
R640-60-500R	500	1,1	1,6	1300		
R640-70-1k65	1650	0,63	0,9	1300		
R640-80-5k	5000	0,36	0,5	1300		
R960-00-0R33	0,33	54	76	1900	Approx. 446x230x155 7,9 – 9,1	High loadings Three parallel connected resistors coils, in a housing. Sliding pieces are mechanically and electrically connected. 960/1920VA.
R960-10-1R1	1,1	30	42	1900		
R960-20-3R33	3,33	17	24	1900		
R960-30-11R	11	9,3	13	1900		
R960-40-33R	33	5,4	7,6	1900		
R960-50-110R	110	3	4,2	1900		
R960-60-333R	333	1,7	2,4	1900		
R960-70-1k1	1100	0,98	1,4	1900		
R960-80-3k33	3330	0,54	0,76	1900		
RT320-00-1R	3 x 1	3 x 18	3 x 25	1900	Approx. 446x230x155 7,9 – 9,1	Three phase version with resistance coils. 3 x 320 / 3x640VA.
RT320-10-3R3	3 x 3,3	3 x 10	3 x 14	1900		
RT320-20-10R	3 x 10	3 x 5,7	3 x 8	1900		
RT320-30-33R	3 x 33	3 x 3,1	3 x 4,4	1900		
RT320-40-100R	3 x 100	3 x 1,8	3 x 2,5	1900		
RT320-50-330R	3 x 330	3 x 1,0	3 x 1,4	1900		
RT320-60-1k	3 x 1000	3 x 0,57	3 x 0,8	1900		
RT320-70-3k3	3 x 3300	3 x 0,31	3 x 0,44	1900		
R1100-20-50R	50	4,7	6,6	2200	800x500x500 32	Threephase 3300/ 6600VA
R3300-00-4R5	3x4,5	27	38	6600		
R3300-10-10R	3x10	18	25	6600		
R3300-20-50R	3x50	8,1	11,5	6600		
R3300-30-100R	3x100	5,7	8,1	6600		
R3300-40-330R	3x330	3,2	4,5	6600		

### RT series

VARIABLE RESISTORS  
from 0 to 25/3000 watt

These table type variable resistors are indispensable aids, designed for varying d.c. and a.c. currents or voltages in a wide range of the electrical industry, such as testing the electric circuits of motor vehicles, application in the laboratory and education and other.

The units can be operated as a rheostat or potentiometers.

Many other models  
available on request

#### Applications

- Electrical industry
- Measure and control laboratory
- Educational

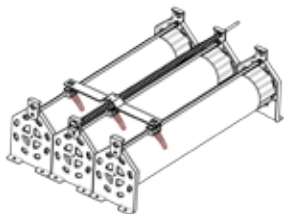
#### Safety standards:

- Construction according to EN61010-1
- Protection degree IP20



### 3-Phase/1Phase Laboratory Linear Rheostat

- R3300



- R1100

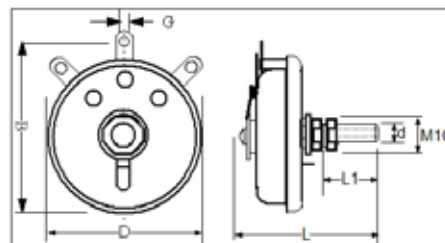


### Single Phase & Three Phase Laboratory Thoroidal Rheostat

Rheostats from 25W to 500W

Resistance value and load current can be made according to customer's application and need. Rheostat size may vary depending on the resistive ohmic value and the current required

Code	Resistance ohm	Power Watt	Dimensions in mm +/-1mm					
			D	B	L	L1	d	G
RT-25W	0-5000	25	45	50	60	25	6	2
RT-50W	0-5000	50	65	70	64	25	6	2
RT-100W	0-5000	100	85	93	66	35	6	4
RT-150W	0-5000	150	105	120	73	35	6	4
RT-300W	0-5000	300	158	170	115	55	10	4
RT-500W	0-5000	500	208	215	122	65	10	4



### Tandem mounted Rheostats : up to 3Kw

Resistance value and load current can be made according to customer's application and need. Rheostat size may vary depending on the resistive ohmic value and the current required

Code	Resistance ohm	Power Watt	Dimensions in mm +/-1mm			
			A	D	C	B
RT2-500W	0-5000	1000	216	196	219	200
RT3-500W	0-5000	1500	216	196	219	300
RT4-500W	0-5000	2000	216	196	219	400
RT5-500W	0-5000	2500	216	196	219	500
RT6-500W	0-5000	3000	216	196	219	600

