

### 10.1 - AC/DC MEASUREMENT

#### Analog and digital instruments:

- Input/output with standard 4 mm safety sockets
- Compact table top version or for vertical frame

- User Manual included
- High precision and reliability
- also available for : 0,3kW, 1kW, 6kW

#### Mod.6200-VA

##### - DC VoltAmmeter

- DC voltmeters: 10–50–150–300V DC
- DC Ammeters: 2,5A -5A -10A -20A



#### Mod.6201-VA

##### - AC VoltAmmeter

- AC voltmeters: 30–100–250–500V AC
- AC Ammeters: 2,5A -5A -10A -20A ;



#### Mod.6208

##### - Power Meters AC

- Max Voltage: 500V
- Max current: 10A - 10A



#### Mod.6201-AD

##### -AC Ammeter Digital

- AC ammeters: 0,02÷ 20A



#### Mod.6201-VD

##### - AC Voltmeter Digital

- AC voltmeters: 2÷500V AC



#### Mod.6201-1PH

##### - AC Voltmeter/Ammeter Digital

- 5 ÷ 300Volt / 0 ÷ 16 Amp.



#### Mod.6202-AC

##### - AC Voltmeter 500V

- Ammeter 20A



#### Mod. 6202-DC

##### -DC Voltmeter 600V

- Ammeter 20A



#### Mod.6202-ACDC

##### - AC-DC Voltmeter

- AC-DC Ammeter



### 10.2 - AC/DC MEASUREMENT

#### Digital instruments:

- Input/output with standard 4 mm safety sockets
- High precision and reliability
- also available for : 1kW, 3kW, 6kW
- Optional RS485/USB for PC Win
- Optional software for PC Windows with data recording & export

#### MOD.6203-01

##### -3-Ph Multimeter with graphic display

- 3 inputs for voltage 15÷ 600V AC
- 3 input for current 0,02÷20A AC
- Active, reactive, apparent power, Frequency, Power factor meter.



#### Mod.6203-02

##### -DC digital VA

- Voltmeter 0,1÷300V DC
- Ammeter 0,01÷20A DC



#### Mod.6203-03

##### -AC digital VA

- Voltmeter 0,1÷600V AC
- Ammeter 0,01÷20A AC



#### Mod.6203-04DC

##### -DC digital VAW Meter

- input voltage: 1÷ 220V DC
- input current: 0,03÷20A DC
- VAW (Volt, Ampere, Watt)
- Accuracy: 0,5%



#### MOD.6209

##### -3-Ph Multimeter

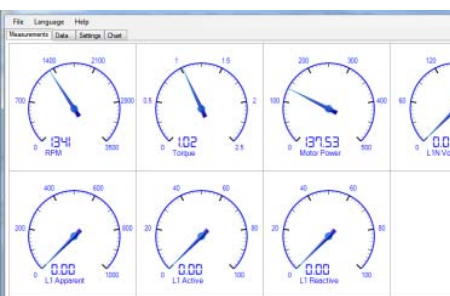
- 3 inputs for voltage 15÷ 500V AC
- 3 input for current 0,02÷16A AC
- Active, reactive, apparent power, Frequency, Power factor meter.



#### Mod.6209M

##### -1-Ph Multimeter

- input voltage: 10÷ 290V AC
- input current: 0,02÷16A AC
- Active, reactive, apparent power, Frequency, Power factor meter.
- Accuracy: 0,5%



#### Mod.6203/09-SW

##### Software for Windows

Software for connecting to Windows computers for the visualization, recording and export of all data collected by the instruments. Digital and analog display (on PC's video) of all parameters (voltage, current, power, speed, torque, mechanical power).