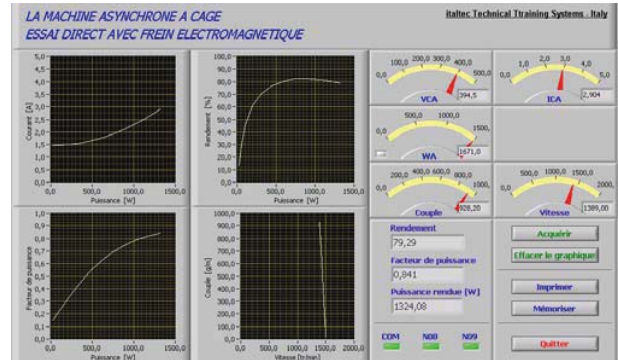
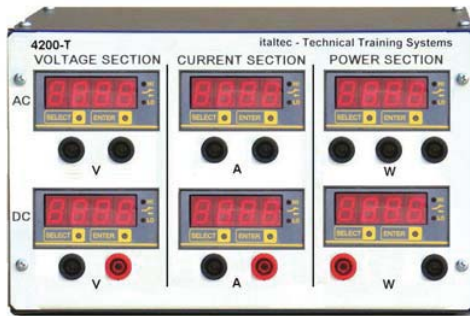


EDAS - Emms Data Acquisition System



Data Acquisition System

- Three voltage and three current inputs
- AC and DC measure

Designed for use with the EMMS system where a number of measuring instruments are generally required to evaluate the system behavior. Used with a PC, the software provides isolated channel that are shown on-screen virtual instrumentation of ac dc voltmeters AC /DC ammeters, AC/DC power meter, RPM, Torque, Frequency and Phase meter.

The set-up of an instrument(s) makes available the indicated values to be saved in files and if required exported to spreadsheet software packages, to enable the results to be evaluated, manipulated or plotted. A very powerful software features is the ability to plot in real-time electrical machines torque/speed curves and associated characteristic. such as output versus torque and efficiency versus output power. Up to four automatic plots can be run simultaneously with all measured data available for export to spreadsheet software. Graphical results can be printed from the automatic plotting feature.

Features:

- Computer based machines testing system
- Display up to nine functions
- Meter choice from ten functions
- Analogue or digital virtual meter
- User definable meters
- Real-time plotting
- Four separate graph plots simultaneously
- Multi-graph plotting, eight plots per graph
- Data export facility
- Browser based software

Curriculum coverage:

- Single Phase Transformers
- Three Phase Transformers
- Electrical machines - AC/DC motors and generators
- The Separately Excited dc Motor
- Series Shunt & Compound DC Motors
- Separately Excited, Shunt and Compound
- DC Generators;
- AC Induction Motors
- Single Phase Induction Motors
- Three Phase Synchronous Motor
- Three Phase Synchronous Generators